



**VALLEMAGGIA**  
*the magic valley*

Vallemaggia Turismo  
CH 6673 Maggia  
Tel. +41 91 753 18 85  
Fax +41 91 753 22 12  
info@vallemaggia.ch

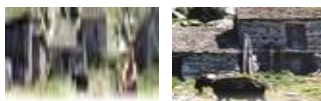
Nimi trails and goats

**Alpe Nimi: excursions and farm holidays**

From the small church of S. Antonio in Gordevio in the upper part of the village (Bri  ) the track conduces to Archeggio (my home in Winter and Spring), approximately in an 1 hour walk. Passing Brunescio (which is a large meadow in terraces with several "rustici" at 1300 m s/l) you arrive to the Nimi Alp at 1718 m s/l, where the paradise seems to be close! Of course not everybody will go so high. For them there are other routes to enjoy. From Archeggio going on your right and passing through Flecc, Chimoi,  r, following the path leading down to the parish church (Gordevio–Villa).

Also from Nimi there are several ways to go back changing itinerary. Going to the Monti di Aiarlo the track goes down to Maggia (village 5 km from Gordevio). In direction Locarno you can go up to Madone di Giove, Trosa and Cimetta, where chair–lift and funicular descend to the town. The passage from Vallemaggia to Valle Verzasca permit to descend Brione Verzasca or Corippo.

Nimi ... <http://www.gaissepeter.ch>



File from 23 Apr, 2003 – LastMod. 15 Sep, 2005 23:09:32

***Original Url <http://www.magicvalley.ch/magic/20,1051092058/en/>***